

Adamsville Regional Health Center

Atlanta, GA



SQ FT
34,000 BGSF



OWNER/AFFILIATION
Fulton County
Department of Health
& Wellness



ARCHITECT(S)
Stanley Beaman &
Sears



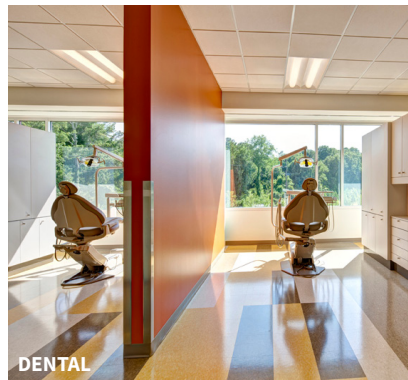
COMPLETION DATE
2012



ENTRANCE



ATRIUM



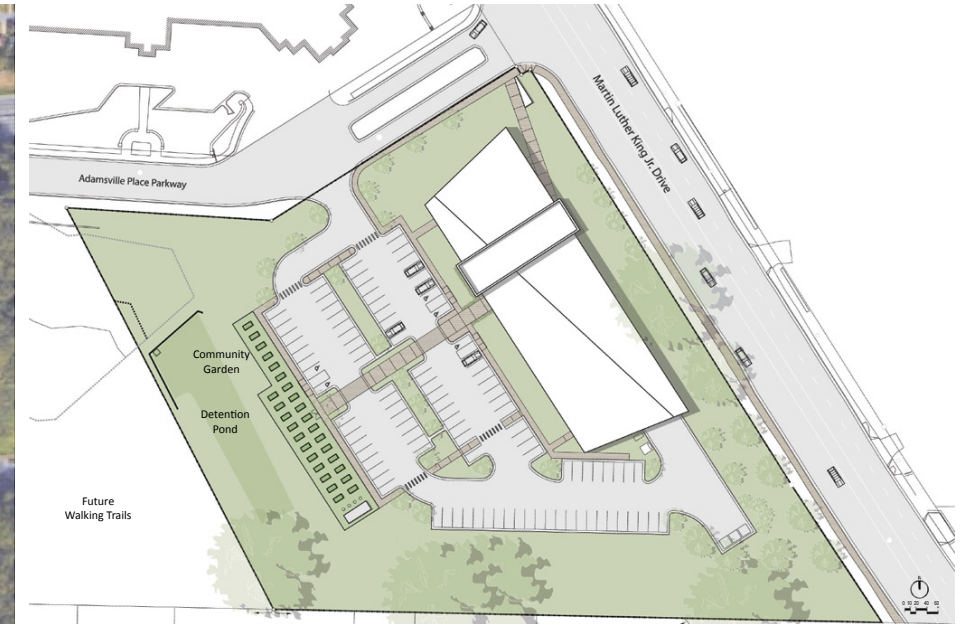
DENTAL



SITE MAP

ABOUT | DESIGN INTENTIONS

Inspiration for the exterior and interior design was derived from the communal folk art of quilting and the social and aesthetic traditions of the African-American community. Also an inspiration were the collage paintings by celebrated Atlanta artist Radcliffe Bailey, known for piecing together found objects, archival photographs and historic imagery with jazz-like effects. These inspirations led to the idea of how the building's exterior materials could reflect the arrhythmic yet unified patterns of both quilting and improvisational music resulting in randomized patterning devices used in the exterior metal wall panels and the punched window locations.



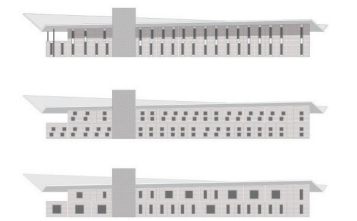
SITE PLAN



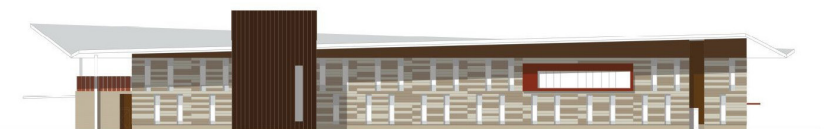
Gele's Bend Quilt
Anne Mae Young, Circa 1975



METAL PANEL PATTERN STUDIES



PUNCHED WINDOW PATTERN STUDIES



CONCEPTUAL ELEVATION

Adamsville Regional Health Center

Atlanta, GA

"We created a non-institutional building design that is welcoming and vibrant, and provides the community with a health center that is focused on wellness." - Betsy Beaman

DESIGN STRATEGIES

1) The Clamp

The clamp houses and protects all roof mounted mechanical equipment, defines entries and acts as a beacon for the building.

2) Monumental Roof

The monumental roof unites all disparate programs, the white surface reduces heat island effect and roof overhangs provide shade.

3) Curtain Wall / Punched Windows

Maximizes natural light to double height interior space. High efficiency, low-e, insulated glazing provides natural light to program spaces. Patterning device. High efficiency, low-e, insulated glazing.

4) Interior

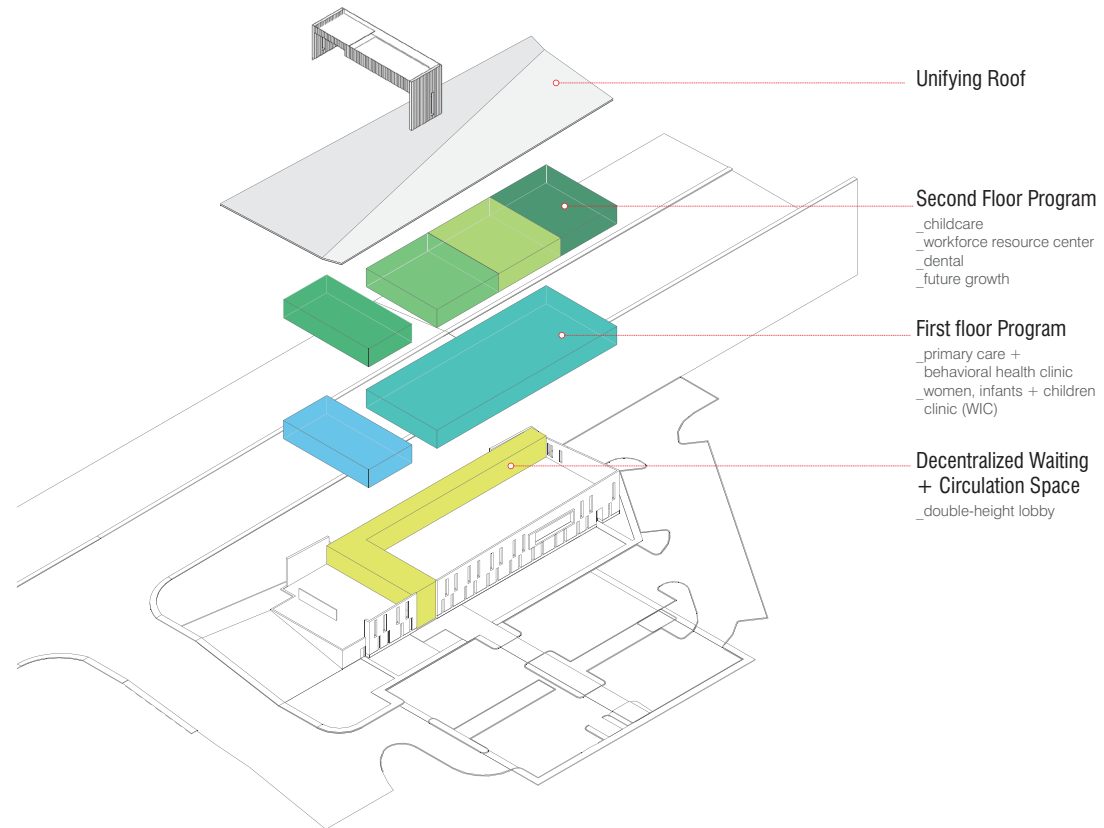
Low voc materials provide a healthy interior environment. High efficiency plumbing fixtures reduces water use by 20.61%.

5) Brick Masonry

Stereotomic condition roots building in the site

6) Metal Wall Panels

Rain screen and patterning device



Unifying Roof

Second Floor Program

- _ childcare
- _ workforce resource center
- _ dental
- _ future growth

First floor Program

- _ primary care +
- _ behavioral health clinic
- _ women, infants + children
- _ clinic (WIC)

Decentralized Waiting

+ Circulation Space

- _ double-height lobby

EXPLODED AXONOMETRIC



Adamsville Regional Health Center

Atlanta, GA

DEPARTMENT PLAN KEY :

- Administrative Offices
- Break Room Suite
- Building Support
- Childcare
- Dental Clinic
- Primary Care + Behavioral Health
- Shell Space
- Women, Infant, and Child Clinic
- Workforce Center

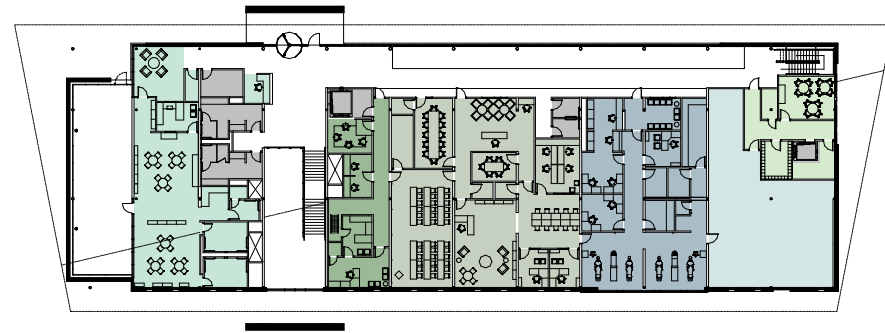
DEPARTMENTAL GROSS SQUARE FOOT TAKE-OFFS

Department	Net	Gross
Administrative Offices	669 SF	890 SF
Break Room Suite	506 SF	673 SF
Building Support	2,490 SF	3,312 SF
Childcare	2,033 SF	2,704 SF
Dental Clinic	1,735 SF	2,308 SF
Primary Care + Behavioral Health	5,969 SF	7,939 SF
Shell Space	1,728 SF	2,298 SF
Women, Infant, and Child Clinic	2,860 SF	3,804 SF
Workforce Center	3,241 SF	4,311 SF

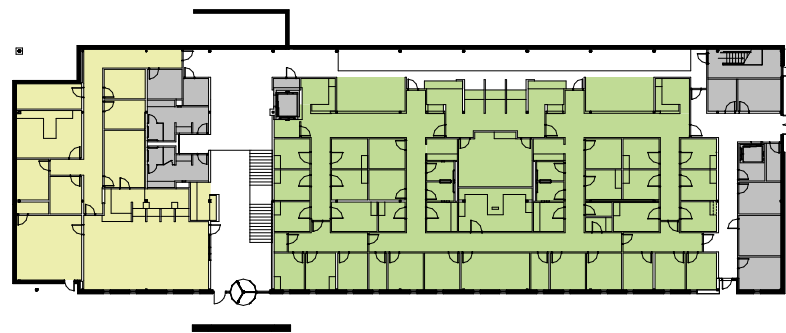
Departmental Net to Gross Factor: 1.33

Note: "Departmental Square footages take-off based on 'Analysis of Departmental Area in Contemporary Hospitals calculation methodologies & Design Factors Report, 2014"

DEPARTMENTAL ANALYSIS



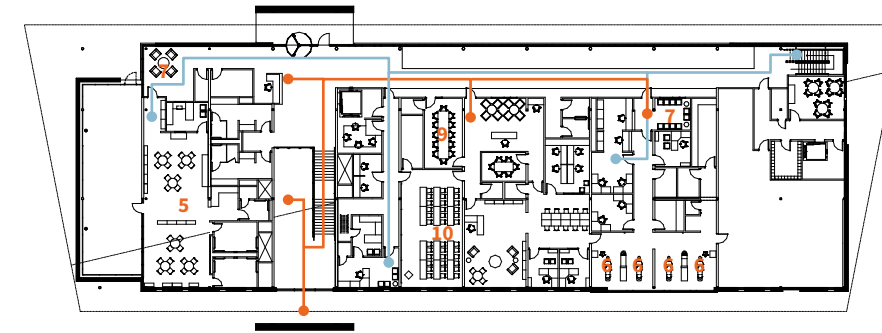
Level 2



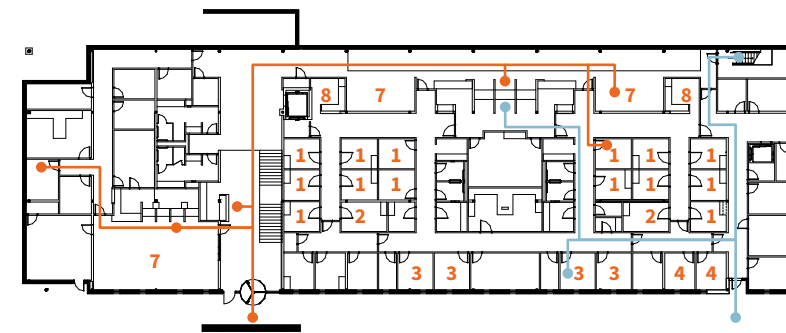
LEVEL 1



TRAVEL DISTANCE ANALYSIS



Level 2



LEVEL 1



KEY SPACES

- 1 Exam Rooms (108 sf)
- 2 Exam/Procedure Rooms (131 sf)
- 3 Behavioral Health Office (128 sf)
- 4 MD Office (110 sf)
- 5 Play Care (1100 sf)
- 6 Dental Exam (125 sf)
- 7 Waiting
- 8 Nurse Station
- 9 Conference
- 10 Classroom

PATIENT TRAVEL DISTANCE ANALYSIS

- ▶ From Entrance to Greeter 34 ft
- ▶ From Greeter to WIC 26 ft
- ▶ From Greeter to Primary Care Waiting 130 ft
- ▶ From Primary Care Waiting to Exam Room 58 ft
- ▶ From Greeter to Childcare 97 ft
- ▶ From Greeter to Dental Clinic 191 ft
- ▶ From Greeter to Workforce Center 137 ft

TRAVEL DISTANCE KEY

- Patient 60 ft - 225 ft
- Staff 29 ft - 345 ft

Adamsville Regional Health Center

Atlanta, GA

AIA/AAH DESIGN AWARD WINNER

Category A: Built, Less than \$25 million in construction cost

JURY COMMENT

- ▶ A great solution for delivering community healthcare in an energy conscious and efficient cost solution that is wonderfully scaled. The design solution is clean, open and inviting. The final result is simple and strong with clear way finding and easily maintained materials. We applaud the way it meets the intent of the program, to bring health resources closer to the community.
- ▶ This appears to be a wonderful neighborhood building. The porch presentation to the street housing the protected play area gives the building a delightful public disposition. The decentralized waiting also seems to be supportive of community. The calibration of the material and light strategy to the program is clever and makes for good scale and clear organization for users.



GRAND STAIR



PLAYGROUND FOR CHILDREN



ATRIUM SPACE



SKYLIGHT



EXTERIOR VIEW

PROCESS

A design-build, fast-track project, the health center building was completed, from start to finish, in 275 days. This required mediating between multiple stakeholders, including the city, county and community members; for example, convincing all that the support and staff spaces could be successfully shared between the various services, maximizing the building's efficiency. It was a singular achievement to design, detail and build such a sophisticated and elegant structure under particularly harsh economic and schedule constraints.

PROJECT SUMMARY:

Project: Adamsville Regional Health Center
Project location: Atlanta, GA
Owner/Client: Fulton County Department of Health & Wellness
Architect: Stanley Beaman & Sears
Construction manager: BDR/Synergy
Structural engineer: Uzun & Case
General contractor: Whiting-Turner Contracting/Hermosa Construction Group
Mechanical engineer: Johnson Spellman & Associates
Electrical engineer: Barnett Consulting Engineers
Photographs/Illustrations: Jonathan Hillyer
Construction cost: \$5,500,000
Building area GSF: 34,000 SF
Cost per square foot: \$161/SF
Substantial completion date: 2012