

THE **pryde**
HYDE PARK



DIMELLA
SHAFFER Bricks & Mortar | Heart & Soul

PENNROSE

LGBTQ
SENIOR
HOUSING

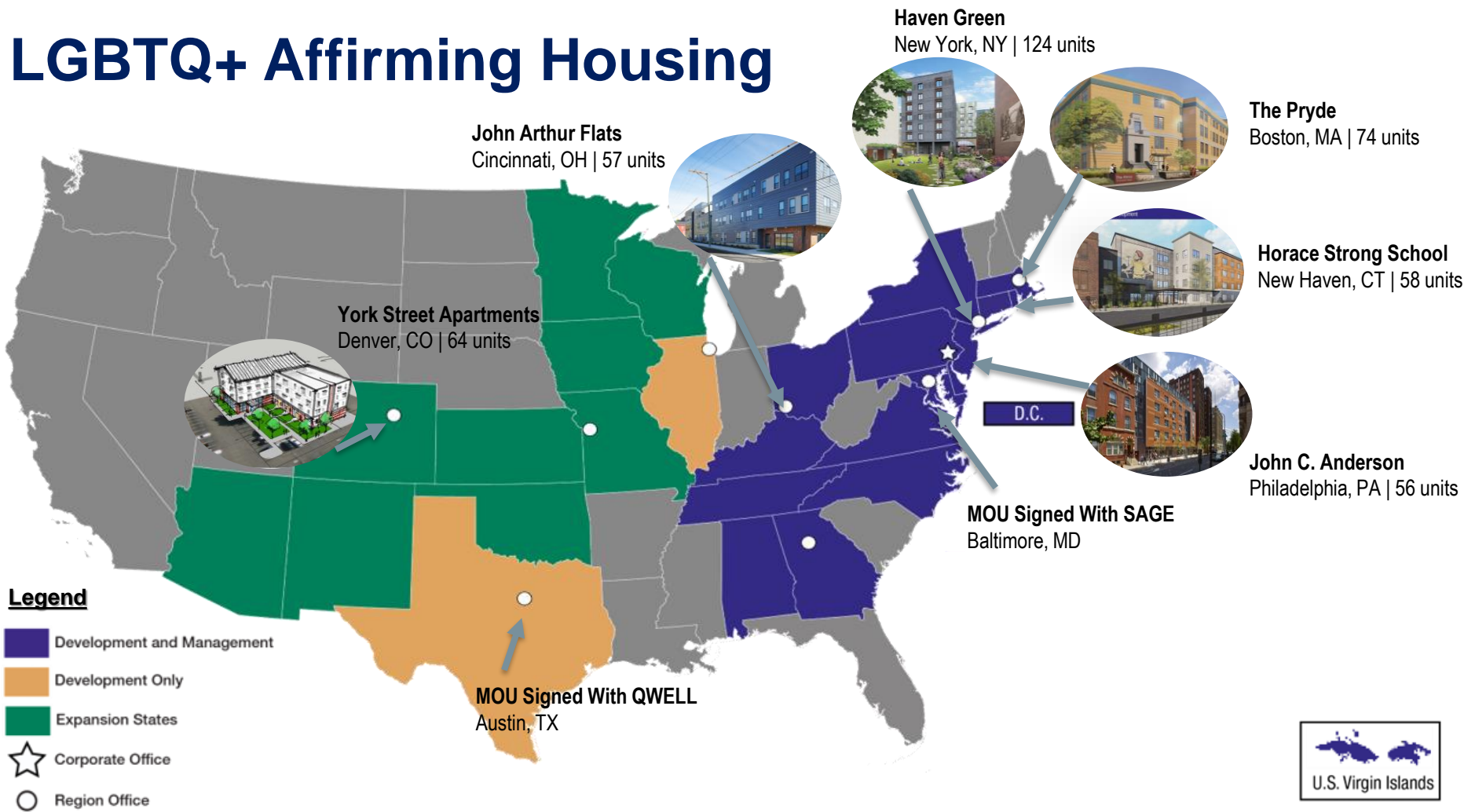
PENNROSE

Bricks & Mortar | Heart & Soul

- Privately held corporation
- Active in 20 states, DC, and USVI, with development offices in:
 - Boston
 - Atlanta
 - Baltimore
 - Cincinnati
 - Dallas
 - Denver
 - New York City
 - Philadelphia



LGBTQ+ Affirming Housing



What does it mean to be LGBTQ-affirming Senior Housing?

- **NOT preference or set-aside, but creating an affirming culture for all**
- **Partnership with a leading LGBTQ+ organization**
- **LGBTQ affirming Programming / Support Services**
- **LGBTQ Cultural Competency Training for Staff**
- **Branding**
 - Recognizable signs of inclusion
 - Celebration of LGBT culture



Community Outreach

- **Community**
 - Local Main Street
 - Chamber of Commerce
 - Civic Associations
- **Large Events**
 - Tabling at Pride Events
 - Attending and Sponsoring LGBT Events
- **Guest Speakers**
 - Meal Sites





THE **pryde**
HYDE PARK
thepryde.com

THE **pryde**
HYDE PARK
thepryde.com

THE **pryde**
HYDE PARK

out at home.
affordable
senior housing.

THE **pryde**
out at home. HYDE PARK
affordable senior housing.
LGBTQ SENIOR HOUSING

pryde
LGBTQ SENIOR HOUSING

A Welcoming and Inclusive Construction Site

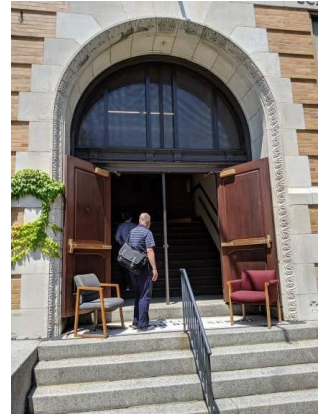


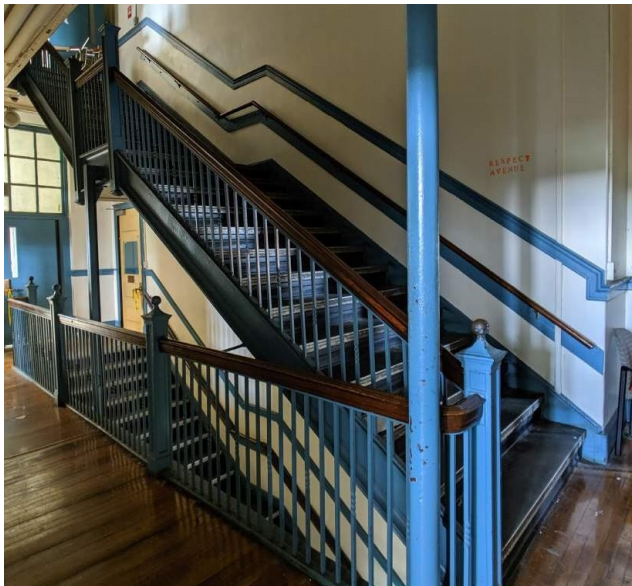
A Welcoming and Inclusive Construction Site



First LGBTQ Affirming Senior Housing in New England
with 74 units of mixed-income housing and 10,000 square feet of community space





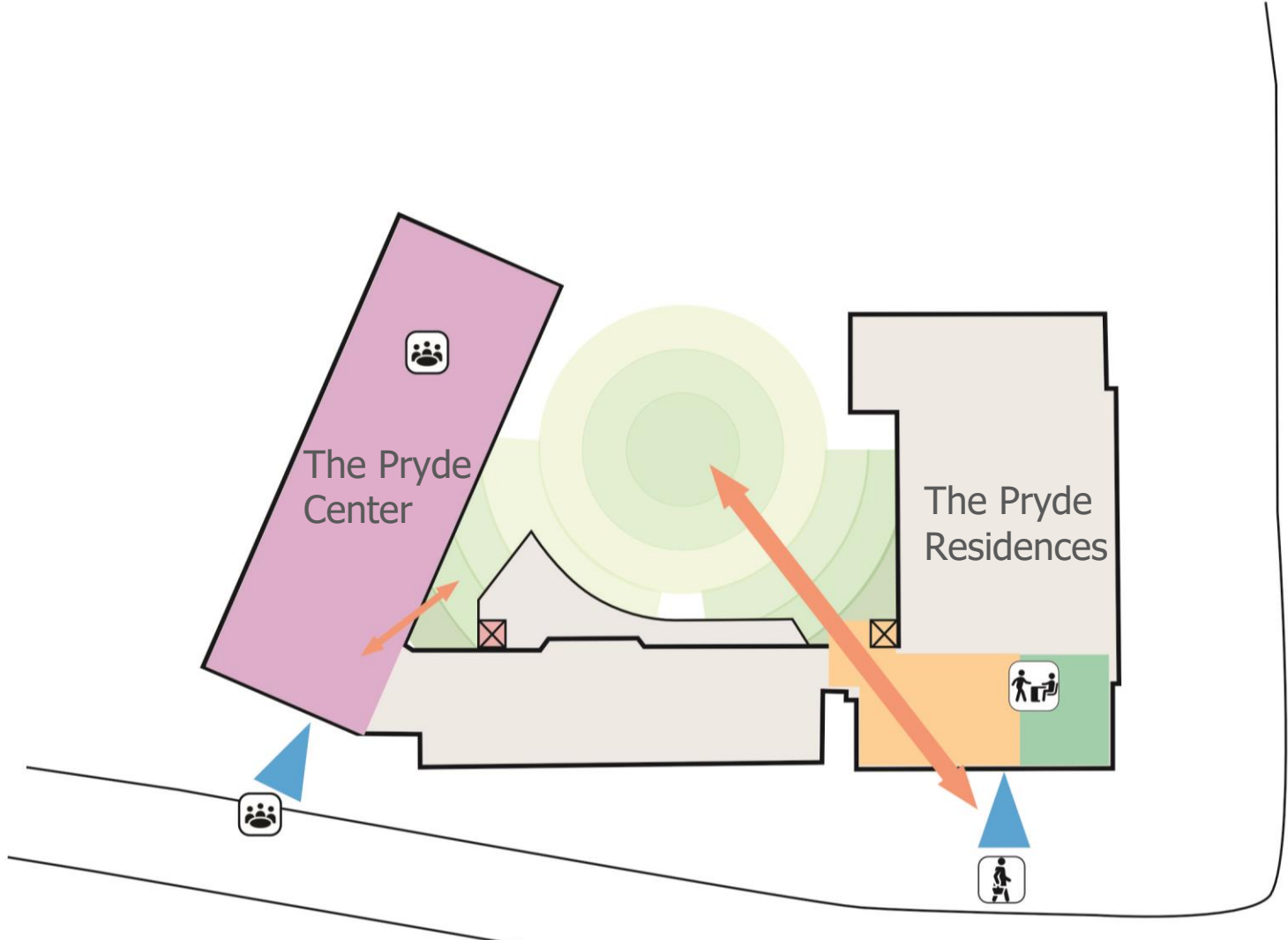






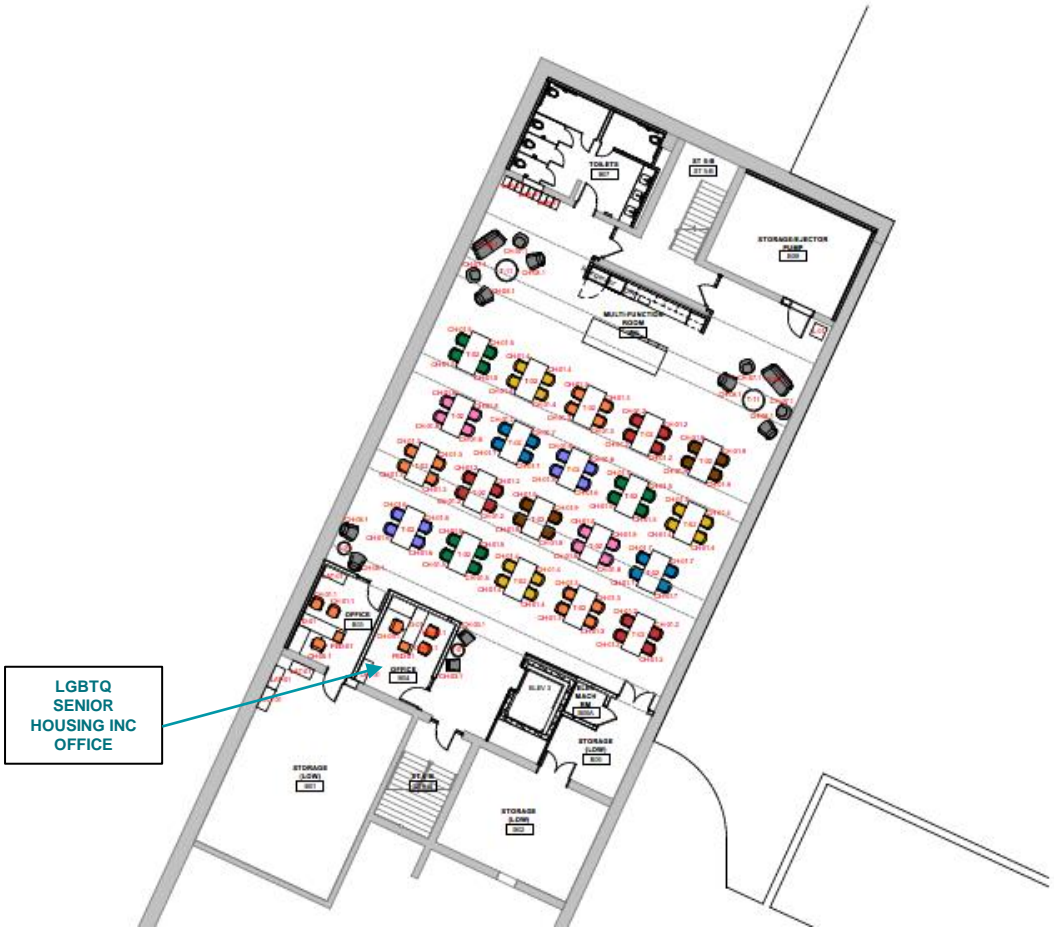
DIMELLA
SHAFFER

DIMELLA
SHAFFER





Ground Level



LGBTQ
SENIOR
HOUSING INC
OFFICE

Basement



Sunday	Monday	Tuesday	Wednesday	Thursday	Friday	Saturday
--------	--------	---------	-----------	----------	--------	----------

April Activities Calendar

Birthdays:

Reminders:



denotes activities planned with LGBTQ+ residents and community in mind

1
 9:00-10:00am Walking Club
 12:00-1:00pm New Residents Welcome Luncheon
 6:00-8:00pm Culture Club: Boston Gay Men's Chorus Performance

2
 8:00-9:00am AA/NA Meeting

11:00-12:00pm Spirituality Hour

1:00-3:00pm Blood Pressure Checks

2:00-4:00pm OLE Singalong and Potluck

3
 10:00-11:00am Purposeful Living Retirement Group

12:00-2:00pm Voter Registration Drive

2:00-3:00 Benefits Counseling with SHINE

4:00-5:00pm Health Promotion: Mobile Vision Clinic Visits

4
 8:00 -10:30am Grocery Shopping

11:00-12:00pm Walking Club

12:00-2:00pm Rainbow Lifelong Learning Institute Class

1:30-3:00pm Pharmacy Run

3:00-5:00pm Streaming: WickedQueer Film Festival

5 PASSOVER BEGINS
 10:00-11:00am Yoga

11:00-12:00pm Healthy Eating Class

4:00-5:00pm Elders of Color Affinity Group

7:00-9:00pm Culture Club: Spring Concert Series - Hyde Park Arts Association

6 INTERNATIONAL ASEXUALITY DAY
 8:00-9:30am Pharmacy Run

11:00-1:00pm PT/OT Sessions

1:30-3:30pm Grocery Shopping

4:00-5:00pm Health Promotion: A Matter of Balance Workshop with ETHOS

7
 8:00-10:00am Breakfast Social

11:00-12:00pm Loss & Bereavement Group: Week 1

5:00-7:00pm Drag BINGO

8
 9:00-10:00am Walking Club

11:00-12:00pm Hyde Park Historical Society Women's History Tour

4:00-5:00pm Rainbow Group: Trans Organizing Meeting

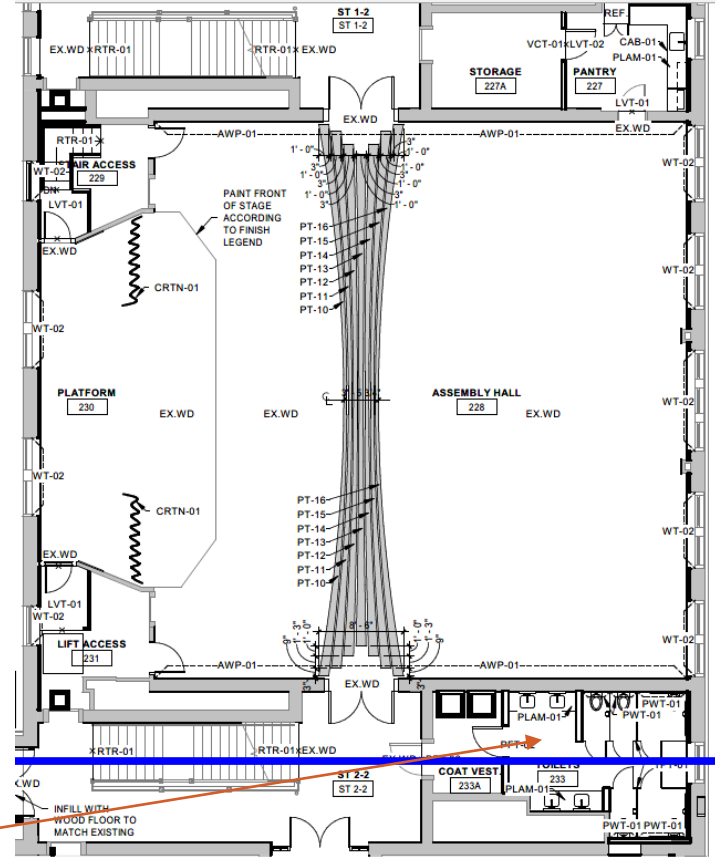


DIMELLA
SHAFFER

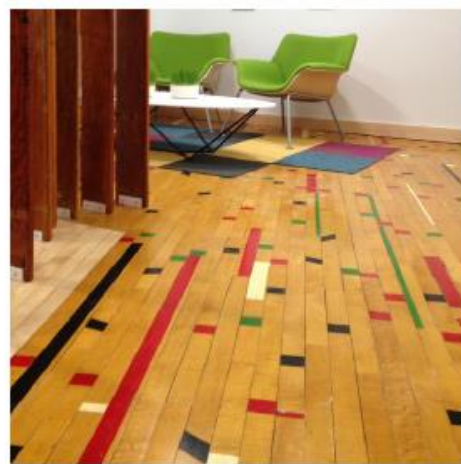
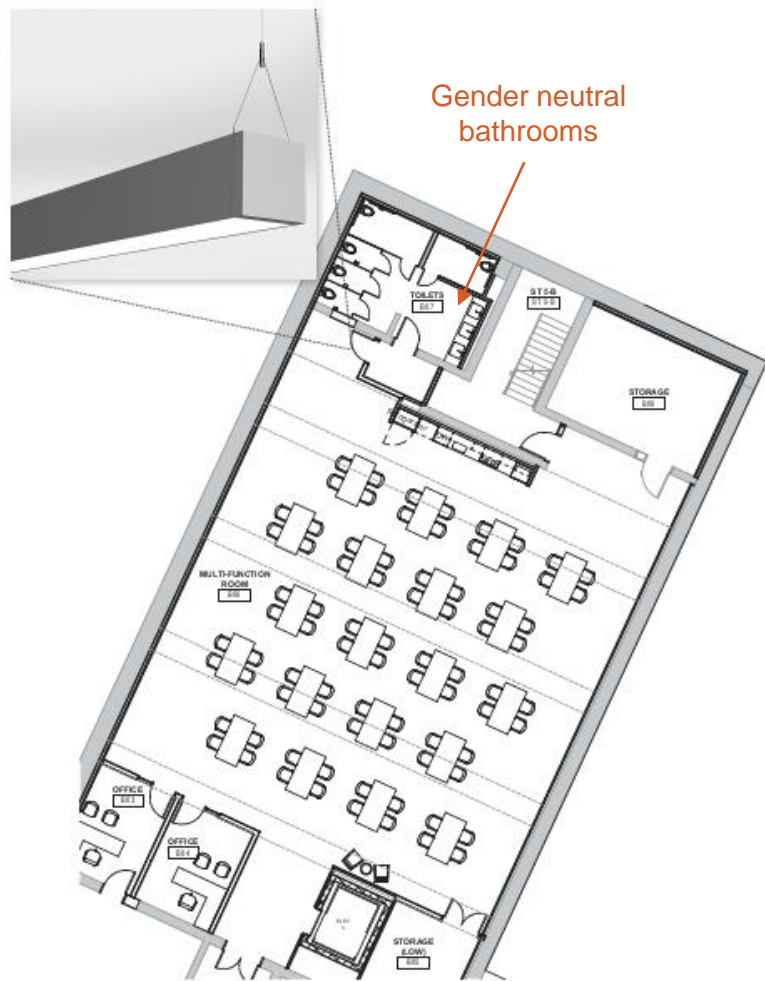
LGATO
COMMUNITY
15 EVEREST ST

DIMELLA
SHAFFER





Gender neutral
bathrooms



Contacts for LGBTQ+ Affirming Developments



Maryland /DC / Virginia
Patrick Stewart
Pstewart@pennrose.com



Mountain & Southwest
Shannon Cox Baker
Sbaker@pennrose.com



New England
Charlie Adams
Cadams@pennrose.com



Midwest & Texas
Tom Anderson
Tanderson@pennrose.com



New York
Dylan Salmons
Dsalmons@pennrose.com



Pennsylvania & New Jersey
Jacob Fisher
Jfisher@pennrose.com



Southeast
Amon Martin
Amartin@pennrose.com